



# ESAF General Meeting 2021

## Prospects for deepening the INGSA-ESAF relationship

---

The International Network for Government Science Advice

# What is INGSA?



*INGSA is a forum for policy makers and knowledge brokers (e.g. national academies, scientific societies, SPI experts) to strengthen and structure science policy interfaces at all levels of governance*

We create opportunities to:

- share knowledge and experience
- build individual and institutional capacities
- develop conceptual and practical approaches
- connect and collaborate intra- and inter-regionally



# Our unique value proposition



- Direct link to ISC offers rapid access to diverse expertise
- Trusted independent partner in science diplomacy
- Accesses collective experience of current and past Chief Science Advisors and equivalents (national, sub-national, supra-national, multi-lateral)
- Unique operational structure, links and coordinates across:
  - Regions for South-South and South North collaboration
  - Policy and academia
  - Theory and practice of science advice



# Our foundational values

- Recognise and explore the impact of different contexts, cultures, and governance/institutional arrangements on science policy interfaces
- Do not advocate for a particular form or structure of science advice to government.
- Welcome diversity in membership by gender, language, age, nationality and discipline, sector
- Value inclusion and co-design principles

# How we operate



- Affiliated body of the International Council for Science
- Leverage support from leading global and multilateral organisations
- Partner with regional, national, subnational governments on projects and events (promotes South-South, South-North, regionally, globally)





# A truly global network



The INGSA Secretariat is located at the University of Auckland, with administrative support from the ISC and the office of the INGSA President (from 2021, this is FRQ, Montreal Quebec Canada). The network operates through a distribute model of regional chapters



# Operational structure and flagship initiatives



INGSA  
Europe

INGSA  
North  
America



**FMSTAN**

Foreign Ministries S&T  
Advisory Network



**SEA SAN**

Southeast Asia  
Science Advice Network

Legislative  
Science Advice

Science Advice in the  
Francophonie

## INGSA Secretariat

- Supports chapters and coordinates between them
- Supports Special interest divisions
- Develops or commissions learning resources
- Conducts or commissions thematic research
- Organises global workshops
- Administers grants
- Provides or organises technical assistance on request
- Maintains multilateral partnerships
- Produces newsletter, podcast
- Organises biennial congress with national host
- Reports to President and Governing Board

## INGSA Knowledge Associate Grants

### 2018

- Morocco
- Nigeria
- Bolivia
- Indonesia
- Philippines
- Sri Lanka

### 2019

- Ethiopia
- Ghana
- Uganda
- Chile
- Mexico
- Indonesia
- Pakistan

### 2021

- Kenya
- Zimbabwe
- Jamaica
- Panama
- Indonesia
- Sri Lanka





# Governing Board



**Prof Rémi Quirion**

**President of INGSA**

Inaugural Chief Scientist of  
Québec and Chair of the Board  
of Directors for Fonds de  
recherche du Québec (FRQ)



**Dr Claire Craig**

**Vice-President (Evidence)**

Provost, Queens College,  
Oxford University



**Dr Binyam Sisay Mendisu**

**VP (Capacity)**

Program Officer · UNESCO-  
International Institute for  
Capacity Building in Africa  
(IICBA)



**Dr Soledad Quiroz-  
Valenzuela**

**Vice-President (Policy)**

Advisor, Ministry of Science,  
Technology, Knowledge and  
Innovation, Chile



## **Chapter Chairs**

Odubanjo  
Abeledos  
Veerakumar  
asivam

## **Division Reps**

Zerbo  
Zakri Hamid  
Tyler

## **GYA Rep**

Saliba

## **ISC Exec**

Hackman

## **INGSA Sec (ex-officio)**

Allen



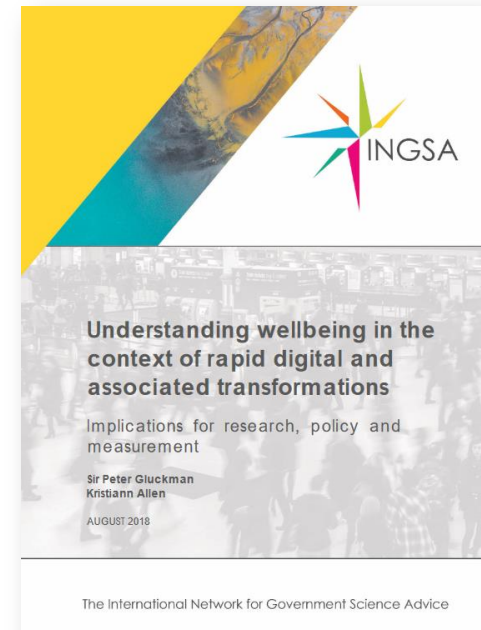
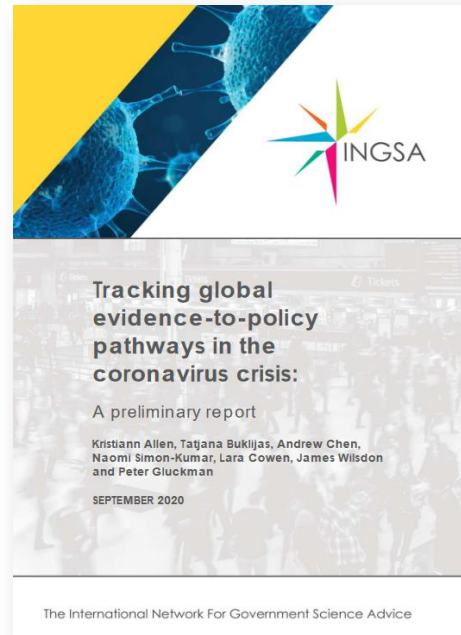
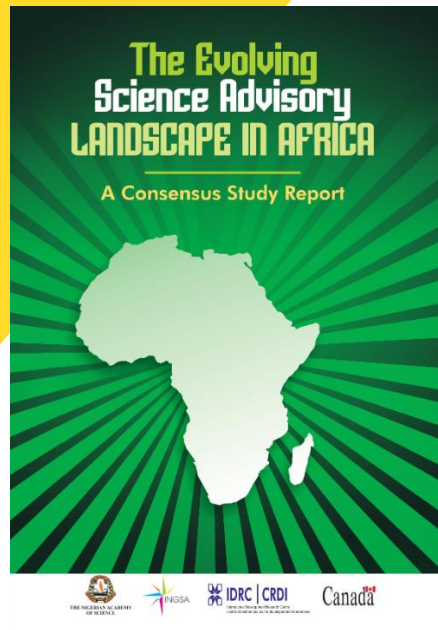
# What we do: Capacity building



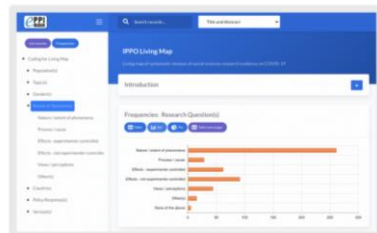
...and soon to be offered as online course modules



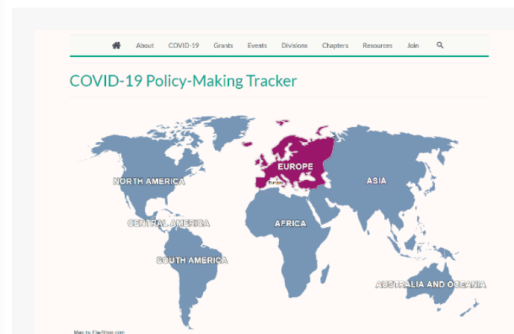
# What we do: Studies, reports, census



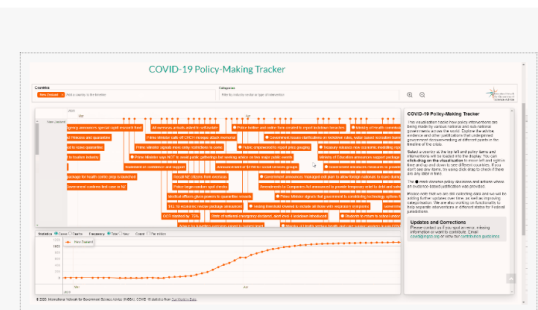
## The IPPO Living Map: a searchable database of evidence on the social impacts of COVID-19



### Single Country

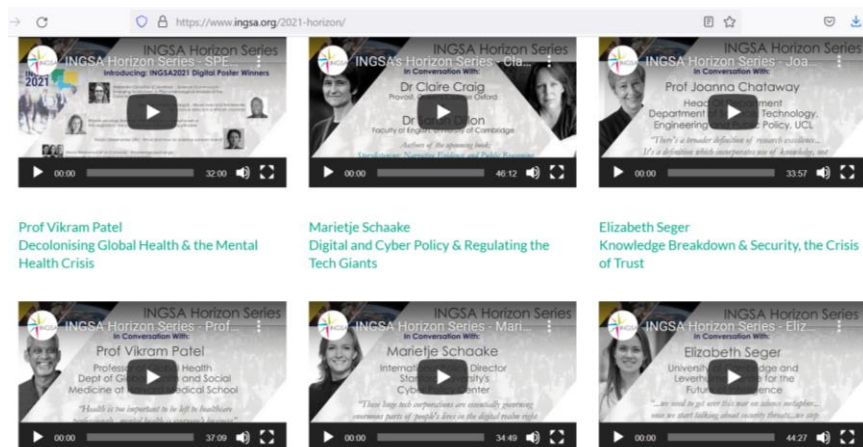


### Multi-country Comparative

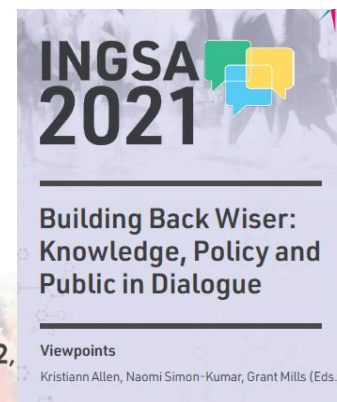
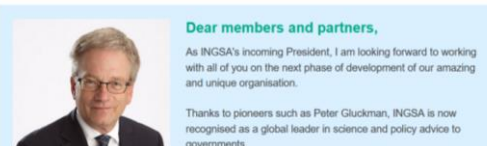




# What we do: Amplifying, curating, and leading global discourse



## INGSA News Sept/Oct 2021







# Delivering through regional chapters



Nigerian  
Academy of  
Sciences, Lagos

INGSA  
North  
America



Centro Redes  
Buenos Aires

INGSA  
Europe



Sunway  
University,  
Kuala Lumpur

## Chapter Personnel

- Chair (honorary)
- Regional Program Officer (0.5 FTE)
- Regional advisory Board (volunteers)

## Chapter operations

- co-located with relevant organisation, able to accommodate 0.5 FTE buy-out
- Shares annual workplan with INGSA Secretariat
- Regional autonomy: Programming to suit regional specificities
  - training workshops
  - essay competitions
  - research projects
  - Policy templates
  - technical assistance
  - special interest divisions,
  - Involved in INGSA central governance





# Development of remaining chapters

## INGSA North America

### North America

- Fonds de Recherches de Quebec taking the lead
- Established relationships with: Office of Chief Science Advisor of Canada & some provincial level, RSC, CCA, NAS, AAAS
- Excellent discussions with State Department Acting S&T Adviser (member of FMSTAN)
- Established relationships with relevant experts: Ottawa U, George Mason U, ASU, CIHR, NSERC

## INGSA Europe

### Europe

- Currently consulting INGSA collaborators in the region
- Established relationship with EC-JRC, SAM, GO-Science, SFI, Euroscience(ESOF), COP26 Secretariat
- Academic relationships in UCL (IPPO), Southampton, Oxford (Tracker), Bergen (TDR), Aalborg, Science-Po (developing)
- History with ESAF: Joint INGSA-ESAF meeting (June 2019). Aligned values and intent (institutional capacity development echoes SEA-SAN)



# Exploring options for INGSA Europe

INGSA  
Europe

## A strategic & operational partner for ecosystem actors

- Amplifying message and value
- Extending research through INGSA network
- Operational capacity
  - Training
  - Research: surveys, case studies
  - Network development (within region and globally)

## What INGSA needs to establish a European Chapter

- Appropriate institutional home (National Academy; Office of Chief Science Advisor; Min Sci; University)
- 0.5 FTE Regional Program Officer (in-kind)
- Start-up € (e.g. group-funded, commissioned work, philanthropy etc.)
- Designated Chair (could be rotational)
- Diverse Advisory Board



What can INGSA and ESAF create together for Europe?

Thank you  
Aitäh

