

Research
Council of
Lithuania

THE RESEARCH COUNCIL OF LITHUANIA: FACTS AND FIGURES

November 2022



R&D
funding and
figures

R&D
institutional
system

R&D IN LITHUANIA

- Lithuania's investment in R&D area (2019, Eurostat,):
 - Lithuania – **1,0 %** of GDP or **484 mln Eur** (2019, Statistics Lithuania),
 - EU average – **2.2 %** of GDP.
 - Total researchers number (FTE) – 9630
 - Total researchers number (head count) – 24614
-
- Universities: 12 state, 7 private
 - Colleges: 12 state, 10 private
 - Research institutes: 13 state, 8 private
 - 300-400 PhD graduates annually
 - ~ 8500 PhD students
 - Researchers number in business and industry ~ 30 %



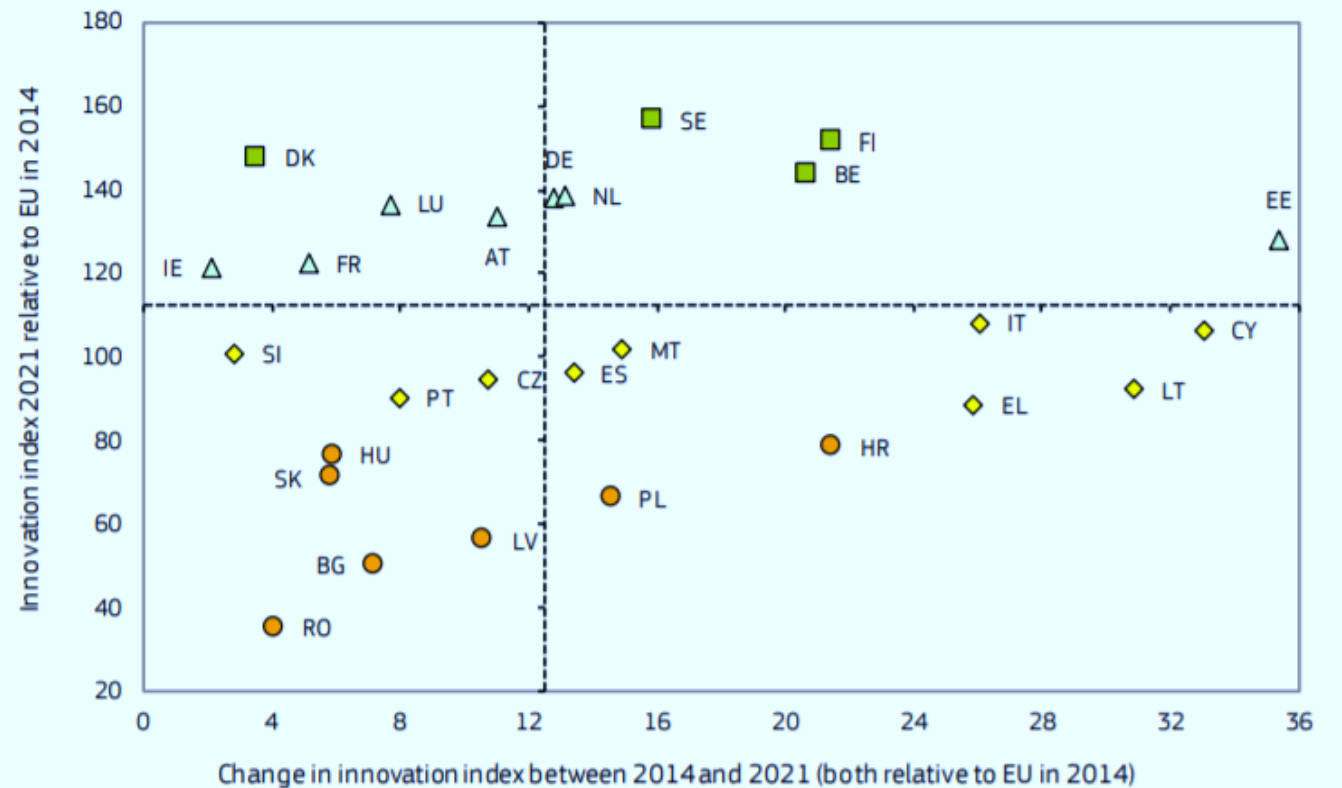
LITHUANIA AS THE GROWING INNOVATOR IN THE EU

Lithuania has been one of the most rapidly growing country among the EU member states in the field of R&I in the time period from 2014 to 2020.

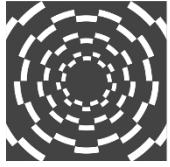
Change in the R&I index between 2014 and 2021 performance improved by:

- Lithuania: + 30.9 % points
- EU average: + 12,5 %-points

Figure 6: Performance and performance change of EU Member States' innovation systems



The vertical axis shows Member States' performance in 2021 relative to that of the EU in 2014. The horizontal axis shows the change in performance between 2014 and 2021 relative to that of the EU in 2014. The dashed lines show the respective scores for the EU.



NATIONAL SMART SPECIALISATION R&I PRIORITIES

2014-2020 priorities:

1. Energy and sustainable environment
2. Health technologies and biotechnologies
3. Agro-innovation and food technologies
4. New production processes, materials and technologies
5. Smart, non-waste and related transport
6. Information and communication technologies
7. Inclusive and creative society

2021-2027 priorities :

1. Health technologies and biotechnologies
2. New production processes, materials and technologies
3. Information and communication technologies



Research
Council of
Lithuania

ESTABLISHMENT



1991. The Science Council of Lithuania was established by the Seimas (the Parliament) as **an advisory body** on R&D policy for the Seimas and the Government

2007. Reorganised into the Research Council of Lithuania to serve as an advisory body on R&D policy as well as **research funding body**

2022 (December). **Changed accountability and expanded functions** taking over them from the Agency for Science, Innovation and Technology

Mission. Actively participate in R&D policy making process aiming effective R&D system, which meets Lithuanian society demands and corresponds the EU R&D policy



MAIN RESPONSIBILITIES

- **Delivering R&D policy and scientific advice**
 - Provides expert advises to the Parliament and the Government of the Republic of Lithuania on R&D policy aspects and training of researchers
- **Ensuring R&D quality**
 - Performs the evaluation of R&D activities and PhD studies in research institutes and universities
 - Carries out an assessment of activities of Lithuanian research and higher education institutions and the long-term R&D programmes in research institutes
- **Providing competitive R&D funding**
 - Executes competitive R&D funding from the state budget, EU instruments, cooperation programmes and other funding sources
- **Fostering trans-national and international R&D cooperation**
 - Promotes integration into the ERA, supports networking activities and participation in the EU and international R&D initiatives



RCL FUNDING COMPETENCIES

Over 30 financial means

- Top-down research - long-term 5 national programmes
- Bottom-up research - research projects initiated by researchers
- Support for researchers carrier, mobility, dissemination activities
- Support for transnational and international R&D cooperation

Over 30 calls for proposals per year

- Special call to fund research activities of Ukrainian researchers in Lithuanian research and study institutions
- Calls covering all carrier stages, including students, PhD, post-docs, early-career and established researchers
- International calls according to bilateral programmes
- Participation in ERA-NET COFUNDS and other coordination-scheme-type calls

Different sources and schemes, wider possibilities

- State budget
 - National research programmes
 - Lithuanistic research and dissemination programme
- Baltic Research Programme (Lithuanian, Latvian and Estonian collaborative research projects funded by the Norway, Iceland and Lichtenstein, EEA financial mechanism 2014-2021)
- EU ESIF funds, ESF and ERDF (2014-2020)
- Horizon Europe

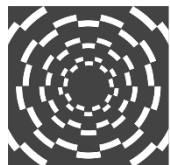


Research
Council of
Lithuania

- Administrates participation in COST, European Cooperation in Science and Technology
- Baltic Research programme (EEA and Norway grants Financial Mechanisms)

INTERNATIONAL COOPERATION

- International joint projects under bilateral programmes:
 - ~ **1 mln Eur annually**
 - Lithuanian–French Cooperation Programme “Gilibert” (Governmental)
 - Lithuanian–Ukraine Cooperation Programme (Governmental)
 - RCL-JSPS (Japan) MoU, signed by RCL
 - RCL-NCN (Poland) MoU, signed by RCL
 - Lithuanian–Latvian–Taiwanese Cooperation Programme (Governmental)



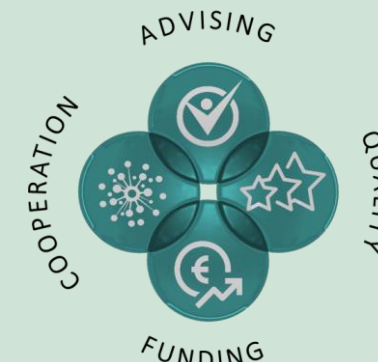
Research Council of Lithuania



PARTICIPATION IN FP CO-FUNDED EU PARTNERSHIPS

Fostering trans-national and international R&D cooperation

- Promotes integration into the ERA, supports networking activities and participation in the EU and international R&D initiatives



Participation in FP Co-funded EU partnerships

Year	2010-2021	2021	2022	2023-2027
Initiative	Participated in 15	Participated in 13 joined BiodivERSa+	THCS	Rare Diseases
			ERA4HEALTH	OH AMR
			SBEP	PAH
			DUT	Safe and Sustainable Food Systems
			Water4All	Accelerating Farming Systems Transitions



Research
Council of
Lithuania



Research Council of Lithuania

- Health
- European Research Council
- Food, bio-economy, natural resources, agriculture and environment
- Culture, creativity and inclusive society
- Joint Research Centre
- Marie Skłodowska-Curie activities
- Research infrastructures
- Widening participation
- ERA

[NCP contact details](#)

PARTICIPATION IN HORIZON EUROPE

LINO

Lithuanian RDI Liaison Office

Lithuanian Research and Innovation Liaison Office in Brussels - LINO - established in 2017 with a purpose to facilitate the successful integration of Lithuanian researchers into international research projects and to follow and report back on the recent developments on the EU R&I policy www.lino.lmt.lt



Research
Council of
Lithuania

Gedimino pr. 3, 01103 Vilnius, Lithuania
+370 670 32435

info@lmt.lt
www.lmt.lt